

# SHARE TANZANIA

MASTERPLAN 2021



INTRODUCTION

VISION

PROJECT GOALS

"sharing can,  
and does,  
change lives."

*John St Julien,  
Founder*



# CONTENT

## SHARE TANZANIA - MASTERPLAN 2021

PAGE 4

SHARE TANZANIA IN A  
NUTSHELL

PAGE 5

MASTERPLAN IN BRIEF

PAGE 6-8

PHASE 1

PAGE 9-11

PHASE 2

PAGE 12-13

PHASE 3

PAGE 14-15

PHASE 4

PAGE 16

CONCLUSION

PAGE 17-18

THANK YOU

PAGE 19

CONTACT



# THE ORGANISATION

## SHARE TANZANIA IN A NUTSHELL



### WHO WE ARE

Share Tanzania is a registered organization NGO/1893 located in Tanzania, supported by the UK Charity Share Tanzania 1169474. We provide food, housing, medical care, rehabilitation, education and, most importantly, the love of an unusual but nevertheless happy family to children in crisis.

### WHAT DO WE DO

Our projects cover a wide range of problems, and we constantly try to find long lasting self-sustainable and eco-friendly solutions for every beneficiary to make the most out of each donation.

We have built a children's village for children with special needs that is currently housing 65 children; a home for children who have lived on the streets that is home to 42 children so far; an animal rescue shelter that provides for 71 rescue dogs; an educational fund that supports over 700 children with full time education; and a music and art school that gives healing and hope to children who lived on the streets.

### BRIEF HISTORY

- Founded in 2014 by John St Julien
- 2014: Uchira Children's Fund and Kilimanjaro Animal Rescue start
- 2015: Featherstale Children's Village opens its doors
- 2016: Angels Gate Center for Street involved children opens
- 2016: Kipepeo Boys and Girls Home opens
- 2017: Music and Art School opens
- 2020: Esther's Home for single mothers and children in need opens
- 2020: Rainbow House for children with special needs opens

# MASTERPLAN IN BRIEF

## OUR VISION TO END THE SUFFERING OF CHILDREN BORN WITH SPECIAL NEEDS

### VISION

Our vision is to share a safe and loving Home, access to Physio- and Occupational Therapy, Medical Care, Music- and Art Therapy and Education with children and vulnerable adults born with special needs in Tanzania.

This blueprint for a Children's Village is multipliable in and around Tanzania to accommodate the needs of the children.

### GOAL

Our goal is to give every child and vulnerable adult born with special needs in Tanzania access to a safe environment where they can live and develop without stigmatization.

Our goal is to reach every special needs child that experiences crisis in Tanzania and improve their life quality to a standard where they not only survive, but also thrive.

### 4 PHASES

- Phase 1: The Children's Home
- Phase 2: Single Parent And Adult Special Needs Homes
- Phase 3: Therapy Center And Outreach Team
- Phase 4: Permaculture Food Farm and Vocational Training Center



# PHASE 1

## THE CHILDREN'S HOME



### VISION

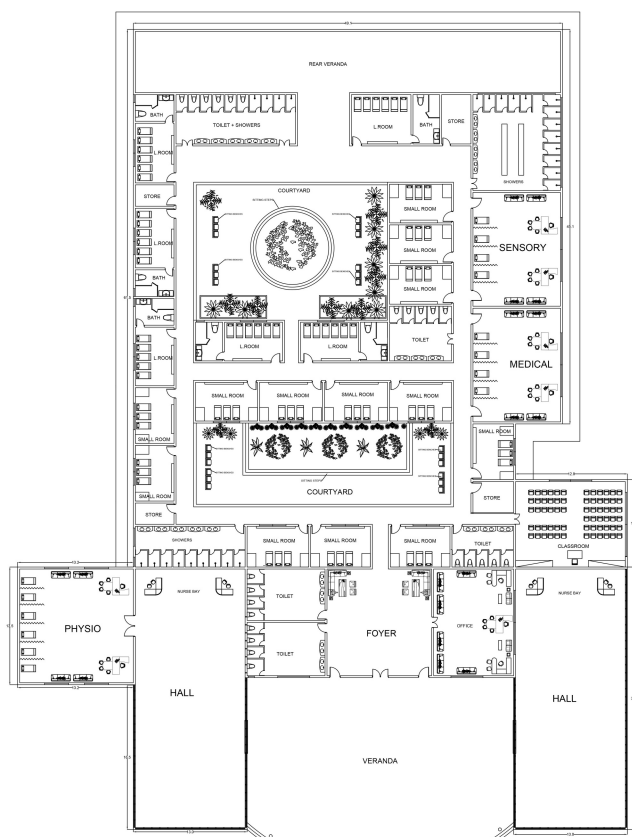
This blueprint for a special needs children's village has one purpose: To solve the hardship of life for children born with special needs. The big Children's Home is set out to comfortably home 75 children with special needs. This Home can be multiplied when needed. The first phase is essential to start transforming lives.

### THE CHILDREN'S HOME

- 39 Small Rooms
- 36 Large Rooms
- 2 Daycare Halls
- 1 Physiotherapy Center
- 1 Classroom
- 1 Medical Care Station
- 1 Sensory Care Center
- 1 Office
- 2 Courtyards
- Front Veranda
- Rear Veranda
- Storage
- Toilets and Washrooms

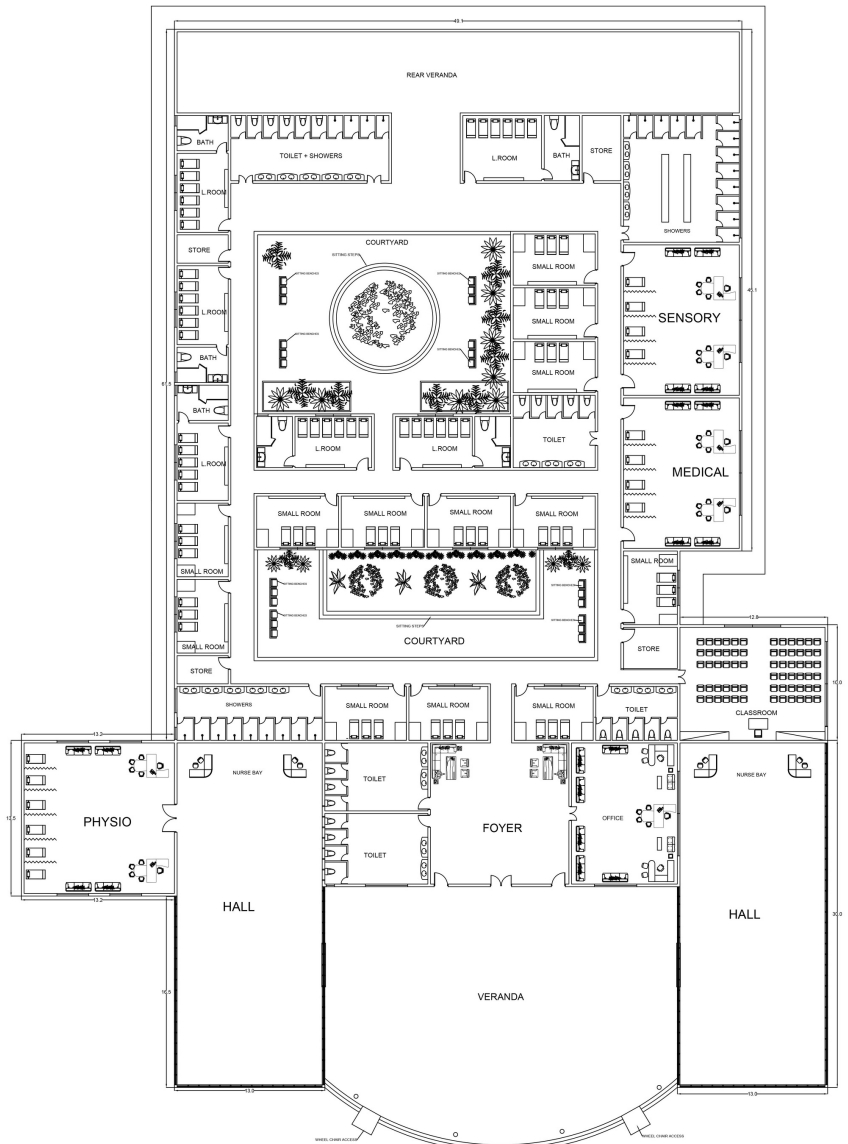
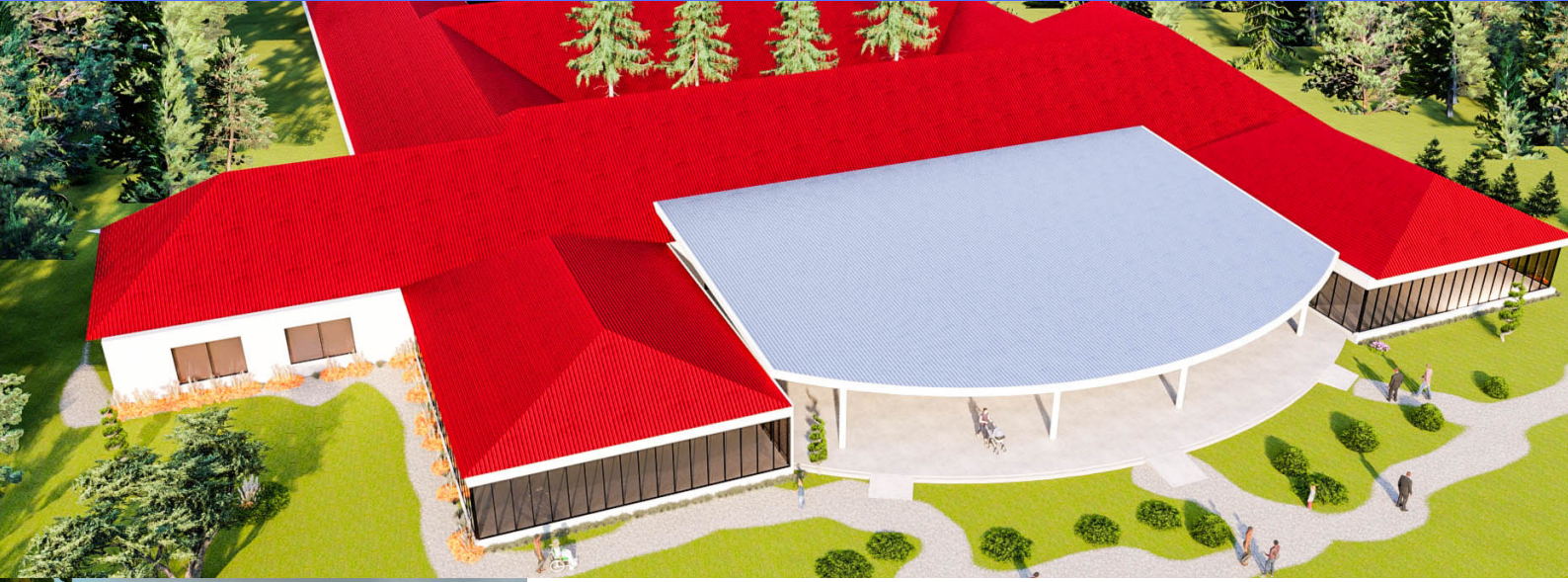
### THE SURROUNDING AREA

- Kitchen Building
- Laundry Station
- Storage
- Playground Area with sensory stimulation
- Water Playground with sandpit
- Garden with raised beets for easy wheelchair access



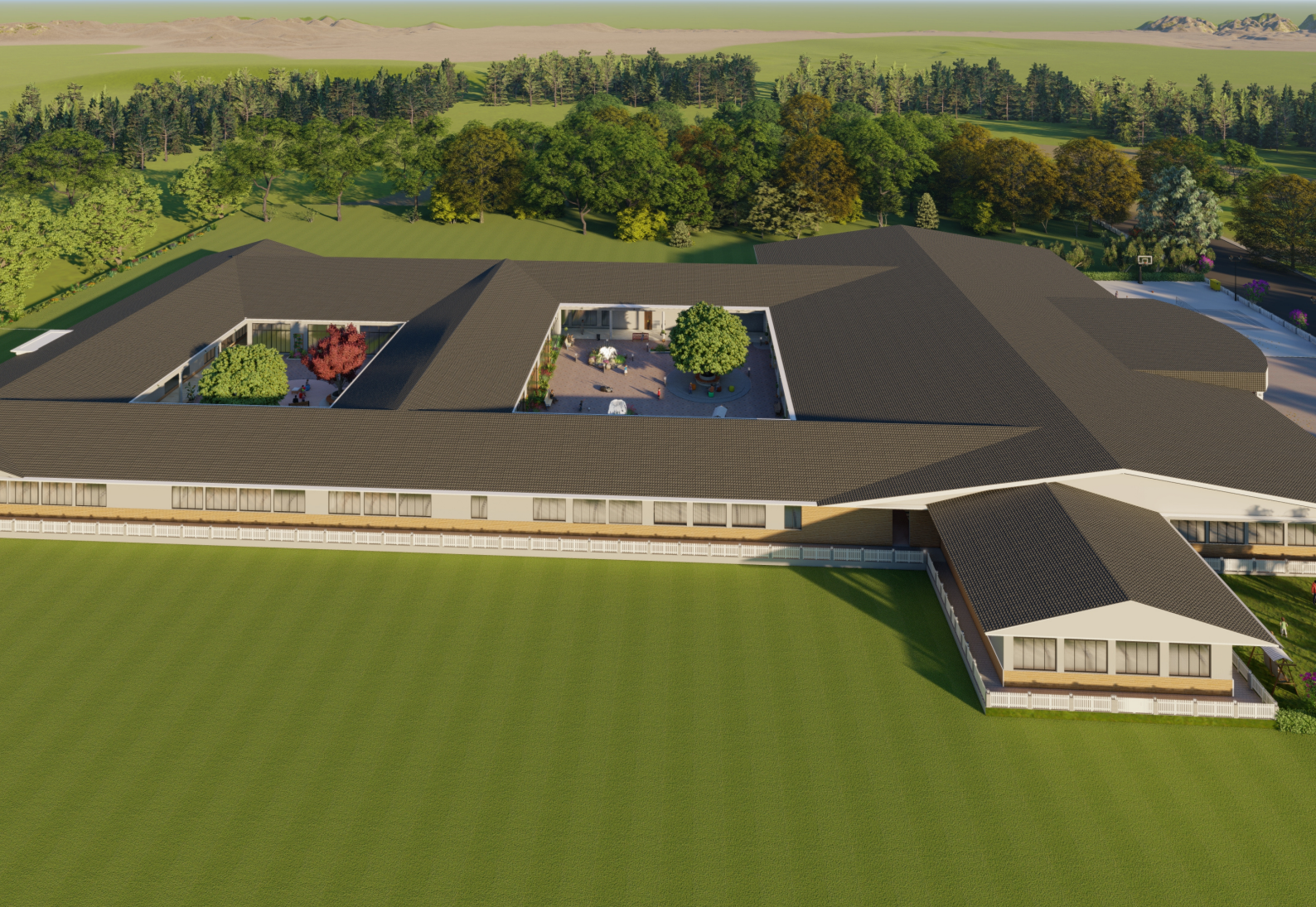
# PHASE 1: VISUAL

## THE CHILDREN'S HOME



# PHASE 1: VISUAL

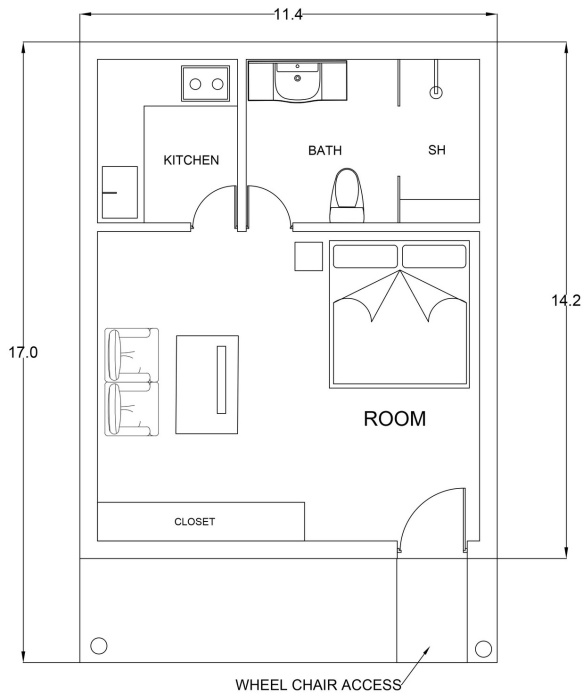
## THE CHILDREN'S HOME





# PHASE 2

## SINGLE PARENT + ADULT SPECIAL NEEDS HOMES



### VISION

### SINGLE PARENT WITH SPECIAL NEEDS CHILD HOMES

Children with special needs far too often get separated from their parents. The Single Parent With Special Needs Child Homes will allow parents to live in a community where they support each other with the needs of their children. The children will have the essential loving bond with their parent whilst thriving in a safe environment that offers care and education to both, parent and child.

### ADULT SPECIAL NEEDS HOMES

Once children with special needs grow into adulthood, they often face a life without purpose or education with no option of self sustainability.

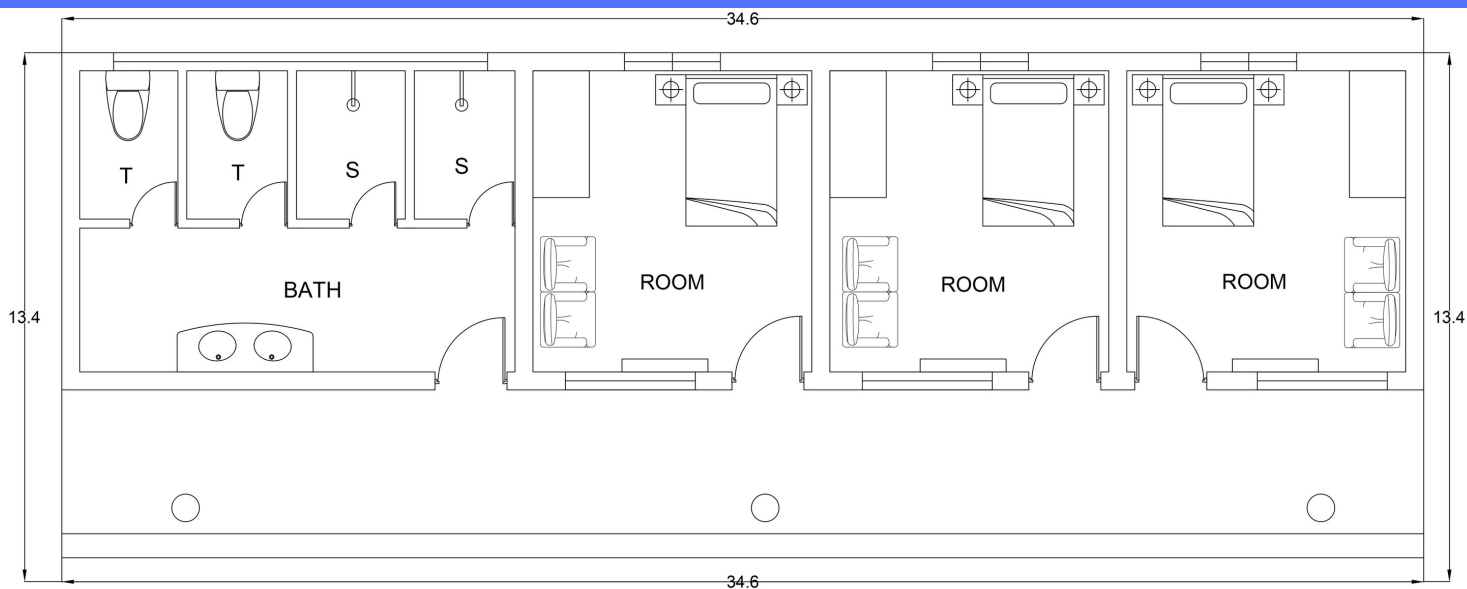
The Adult Special Needs Homes will offer supported living to adults with special needs with access to medical care, education and employment opportunities around the Children's Village.

All Houses are self contained and will offer an independent living in a safe environment and a community with families and vulnerable children and adults that supports each other.



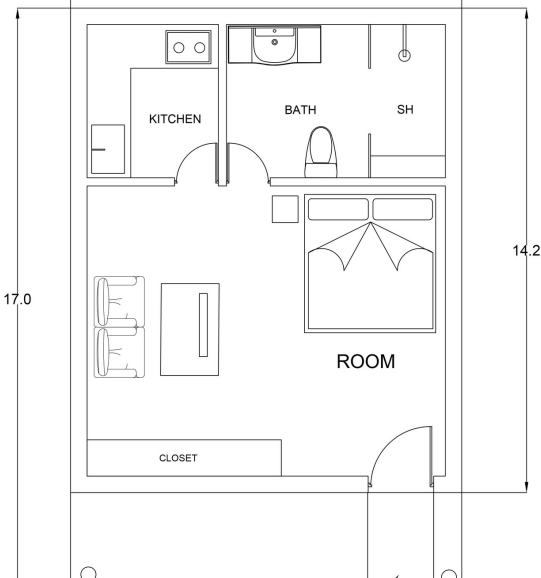
# PHASE 2: VISUAL

## SINGLE PARENT + ADULT SPECIAL NEEDS HOMES



# PHASE 2: VISUAL

SINGLE PARENT + ADULT SPECIAL NEEDS HOMES



# PHASE 3

## THERAPY CENTER AND OUTREACH TEAM

### VISION

The Therapy Center is going to be a key factor in providing the best possible care to children with special needs.

Its only goal is to give the children space and the right care to focus on expanding their ability rather than their disability.

The Center will be open to the community too and will provide high standard care with a focus on Physiotherapy.

The Outreach Team from the Therapy Center will reach children with special needs living with their families in the community and with it we will aim to keep children with their families whenever possible - One of our highest goals.

### THE THERAPY CENTER

- Physiotherapy
- Occupational Therapy
- High Standard Therapy Equipment
- Music Therapy
- Art Therapy
- Medical Station With Doctor And Nurses
- Library
- Prayer Center
- Animal Therapy (Guide Dogs For Blind Children)
- Playground With Sensory Stimulation
- Water Playground And Sandpit
- Sports Area
- Sensory Room
- Silent Room



# PHASE 3: VISUAL

THERAPY CENTER AND OUTREACH TEAM



# PHASE 4

## PERMACULTURE FOOD FARM + VOCATIONAL TRAINING CENTER

### PERMACULTURE FOOD FARM

With the increasing need for sustainability in the charity sector, Share Tanzania must align with the consensus of sustainability, for the security of our residents, operations and the surrounding environment with it. Moving forwards there should be an exit strategy for the communities we support, to stop their reliance on charity, and replace it with self reliance, using mother nature as the industry to support the households involved.

Please find attached our "Permaculture Food Farm" Proposal and find out more about our solution for self-sustainability of the Children's Village.



# PHASE 4

## PERMACULTURE FOOD FARM + VOCATIONAL TRAINING CENTER

### VOCATIONAL TRAINING CENTER

The children born with special needs deserve access to the best education available. Our goal is to create a Vocational Training Center that teaches children with special needs skills matching their ability, and allows them to grow up to become valuable for the community they live in.

The Vocational Training Center will focus on the following professions/skills:

- Bakery/ Home made treats
- crafts, woodwork, art
- tailoring workshop
- mechanical workshop (wood, metal, welding, furniture)
- small business (shop selling fruits, vegetables, basics of life)
- nursery/ day care for babies and children living in the community and babies of staff members
- music studio/ choir/ band
- Permaculture/ gardening
- animal rescue and shelter (cows, goats, rabbits, chicken, dogs)



# CONCLUSION

"SHARING CAN, AND DOES, CHANGE LIVES."

We are excited and grateful to build a safe haven for children who are right now suffering and living in crisis in Tanzania. A place for safety, for physical and mental development, a place for education and faith.

Together we can give children with special needs and vulnerable adults a place to call Home.

"As for me and my house, we will serve the Lord."

*Joshua 24:15*





# THANK YOU!

THANK YOU, SISTERS OF ST. CHARLES BOROMEO

Thank you for sharing your love and your blessings with the children with special needs.

Your faith is going to change hundreds of lives of the most vulnerable children.

We are deeply grateful for your presence in the children's lives.

*John St Julien, Founder*

"The fruit of Love is Service. The fruit of Service is Peace. And Peace begins with a smile."

*Mother Theresa*



# THANK YOU!

THANK YOU, CATHOLIC ARCH-DIOCESE OF ARUSHA

Thank you for sharing your love and your resources with the children with special needs.

Your generosity is the foundation of Hope for hundreds of children living in crisis.

Together we can end their suffering and create a Home of faith and love.

*John St Julien, Founder*

"Each of you should use whatever gift you have received to serve others, as faithful stewards of God's grace in its various forms."

*1 Peter 4:10*



# CONTACT

MASTERPLAN - SHARETANZANIA - 2021



## CONTACT

Founder: John St Julien  
[johnstjulien@sharetanzania.com](mailto:johnstjulien@sharetanzania.com)

Fundraising Manager: Fritzi Flora St Julien  
[fritziflora@sharetanzania.com](mailto:fritziflora@sharetanzania.com)

Project Manager: George Samuel Nyamongo  
[george@sharetanzania.com](mailto:george@sharetanzania.com)  
phone: +255 757 494 312

[www.sharetanzania.com](http://www.sharetanzania.com)